



Turn your data into actionable insight

Commercial operations and compliance functions generate data that can help you answer critical business questions. When the operations team and expert advisors at Model N perform your transactional processing through Model N Business Services, you still have full access and just-in-time availability to the data you need to make important business decisions. With Integrated Business Insights, you can better understand what this critical data means, so you maximize its value.

Integrated Business Insights delivers operational and management reports and in-depth data analysis, performance metrics, and visualizations. These tools answer key questions, such as:

- Are your sales contracts optimized to maximize review?
- Are you overpaying Medicaid rebates, and if so, in what areas?
- Which wholesalers are selling the most product?

Model N Business Services for Life Sciences

Model N Business Services combines people, process, and analytics – all powered by innovative technology – to help you mitigate risk, improve commercial performance, and focus on bringing life-changing products to market quickly.

Our deeply experienced advisors and operations team take the vital revenue management functions off your staff, enabling you to focus on your launch strategy and growth. Using a multi-services technology platform, we uniformly apply pricing and contracting processes across your organization, increasing accuracy in claims processing, rebate calculations, verifications, and reporting.



Answer the questions you routinely ask about your data

Integrated Business Insights is embedded into the same processing application that our analysts and operations team use for transaction processing and calculations. Data is available to you in near-real time, so you always have access to the most up-to-date and accurate information through reports and visualizations.

Based on our deep industry expertise and experience processing transactions for hundreds of life sciences companies, we know what information you need to make decisions that will move your business forward. Reports and analytics have been purpose-built to provide this valuable insight without requiring heavy upfront setup, manual configuration, or error-prone spreadsheets.

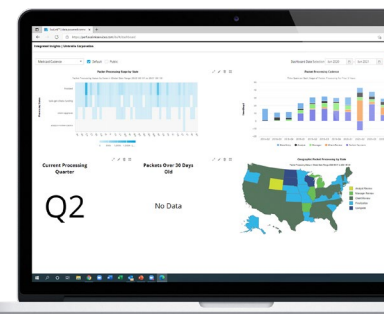
Widgets

Integrated Business Insights includes industry-standard reports and visualizations for Medicaid, government pricing, and chargeback data. Designed to make configuration easy, you can quickly create dashboards that will give your stakeholders the information they need to improve communication and collaboration across functional silos and ultimately, increase revenue and market share.

Track revenue management objectives and program trends, as well as evaluate contract performance by leveraging the extensive widget catalog that includes:

- Chargebacks and sales summaries by brand, wholesaler, and contract
- Chargeback credit processing time trends
- Open chargeback credit amounts
- Chargeback processing status by wholesaler
- Medicaid payments distributions by brand and state
- Medicaid disputes by brand, state, reason code, and age
- Medicaid packet processing
- Price point variance trends across price types
- Price points and history for current wholesale acquisition cost (WAC), 340B (Public Health Services), average manufacturer price (AMP), unit rebate amount (URA), average selling price (ASP), and non-federal average manufacturer price (NFAMP)

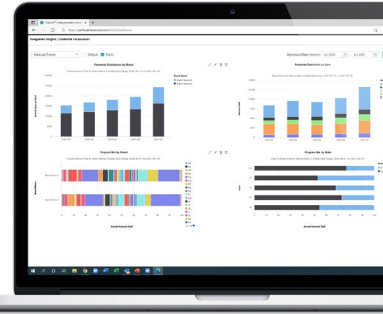
Reporting and widgets are updated on a regular basis, so you always have access to the most up-to-date capabilities to support discovery, analysis, and decision-making.



Providing an at-a-glance view of Medicaid claims processing, this dashboard allows you to **monitor your team's performance, assess the pipeline of in-process invoices, and anticipate cash outlays or accruals.**

On-demand reports

Tabular reports provide access to curated and enriched data by service area, including chargebacks, Medicaid claims, government pricing, and managed care. Create pivot tables and reports to satisfy ad-hoc requests for data and analysis.



Analyze variable date ranges and specific transactions using this dashboard that provides an overview of historical Medicaid payments with product and state distributions.

Spend less time managing data and more time acting on insights

- ✓ **Get full visibility into cross-functional data.**
- ✓ **Understand and track trends and performance.**
- ✓ **Detect potential compliance and pricing risks.**
- ✓ **Guide your business toward new areas of profitability.**
- ✓ **Better inform forecasts for fast-changing markets.**

Gain valuable time driving results

Schedule a demonstration to learn how your team can collaborate with Model N Business Services to achieve operational excellence, support innovation, and make better decisions.